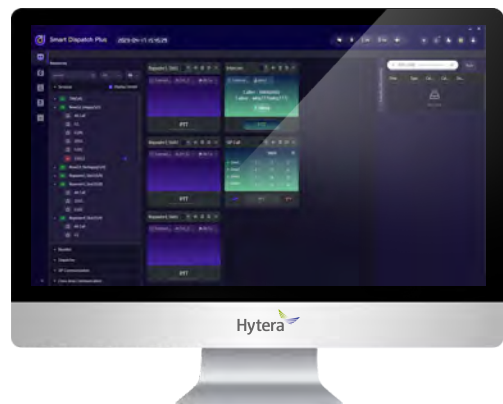




Hytera Smart Dispatch Plus

- High efficiency management
- Integrated applications
- Flexible network and easy deployment
- User-friendly





Professional Solutions Improve Your Management Efficiency

Fast response for public safety

The increasing frequency of natural disasters and public emergencies poses a great challenge to public safety agencies like police, law-enforcement and firefighting. To better respond when emergency strikes, a secure, reliable and efficient dispatching system is in urgent demand.

High efficiency for business group

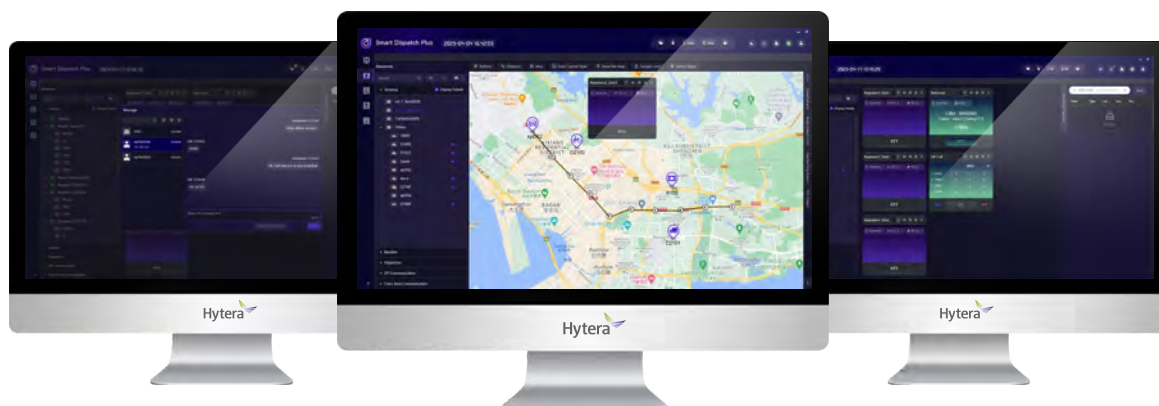
In an ever-changing world and ever-evolving working environment, highly-efficient resource deployment and quick response to customers is a must for every business group striving for survive and growth.

Hytera understands what you need

As a leading supplier of professional wireless communications equipment and solutions, Hytera has explored for more than 30 years in PMR industry and gained lots of experience. Now we are ready to help you conquer these challenges with Hytera Smart Dispatch Plus digital dispatching solution.

Hytera Smart Dispatch Plus

Hytera Smart Dispatch Plus is designed for DMR conventional radio system with efficient communication, management and dispatching functions. Characterized by C/S structure, modularized design and supporting VoIP, Hytera Smart Dispatch Plus delivers you an enhanced dispatching platform with high scalability and robustness.

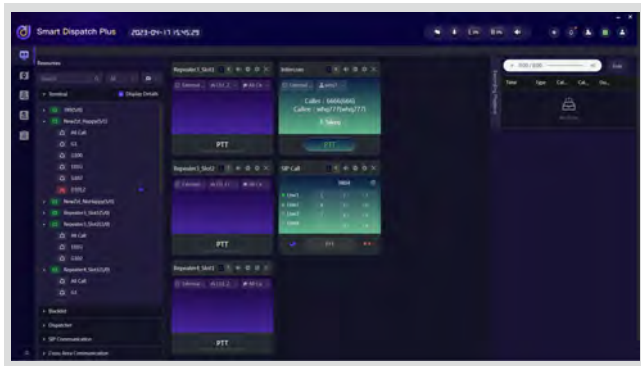


KEY FEATURES



➤ All Types of Voice Call

Support all types of calls including private call, group call and all call to meet your various dispatching needs.



➤ Voice Recording & Playback

Record all voice calls in network. Easy search and playback.

➤ Telephone Interconnection

Support SIP standard protocol to integrate with standard IP-PBX to achieve voice interconnection.

➤ Dispatcher Intercom

All online dispatchers can make a half-duplex call to each other.



➤ Online/Offline Status Reporting

Show online/offline status of a radio while the radio is turned on or off.

➤ Message

Text messages sending and receiving. Send text message to the radios on schedule.

➤ Email Interconnection

Send text message to radio users through email. Radio users are also allowed to send text message to an email address.

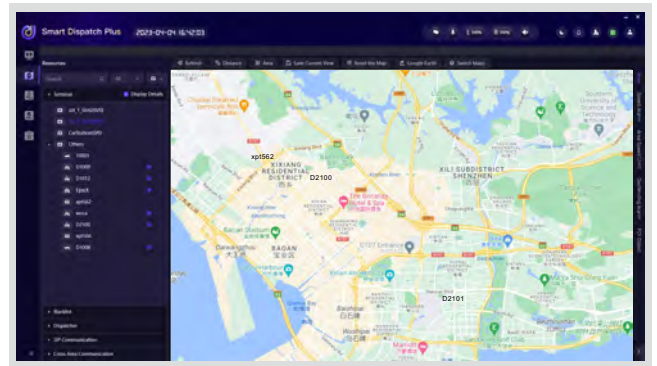
➤ Report Enquiry

Generation various useful reports. These reports can be enquired through keyword, or be exported in Excel or HTML format.



➤ GPS Positioning

Show the GPS location information on the map. The detailed information including radio ID, alias, GPS time, longitude, latitude, speed and speed.

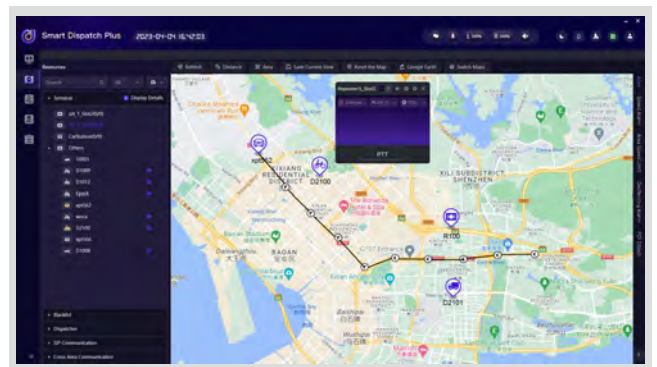


➤ Multiple Maps Supported Engines Support

You can choose your own preferable map based on your specific usage requirements. These maps are Google Maps, Google Offline Map, Open Street Map.

➤ Real-time/History Track

Track the location of radios in real time and display the route on the map. Record and retrieve history track of radios and play on the map.



➤ Call on Map

Select a radio on the map and make a call to the radio.



➤ Database Backup & Recovery

Support both manual backup or scheduled automatic backup to protect database and recordings against data loss.

➤ Authority Management

The administrator can assign specific permission to the dispatcher.

➤ Disable/Enable

Disable or enable a radio remotely. The command will be saved if the radio is offline and be automatically sent until the radio is online.

➤ Remote Monitor

Remotely turn on the microphone of a radio, covertly monitor and record any audible activities surrounding that radio.

➤ Call Alert

If the dispatcher fails to call a radio user, it is able to send a Call Alert to remind the radio user to call back.



➤ Emergency Alarm

When an emergency is triggered, the highlighted emergency message will pop up on the top of dispatcher workspace and the siren sounds.



➤ Geofencing Alarm

Define working areas on the map for radios, send alarm message to radios once the radios move out of the preset areas.

➤ Overspeed/Underspeed Alarm

Define the movement speed limits for radios, send alarm message to radios once the speed is faster or lower than the preset limits.

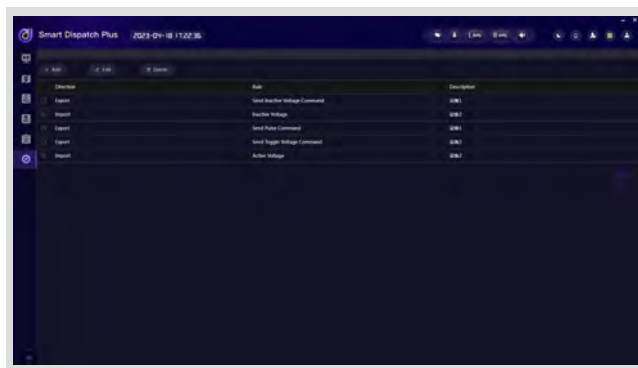
➤ Lone Worker

An alarm will be displayed on the dispatch client if a radio user does not operate the radio within a preset time.



➤ Telemetry

Remotely monitor and control peripheral devices which are connected to the radios.



➤ Work Order

Create, assign and monitor work orders to ensure all tasks are completed on time. It can also support query and statistics which can help the dispatcher improve the management efficiency.



➤ Over-The-Air-Programming (OTAP)

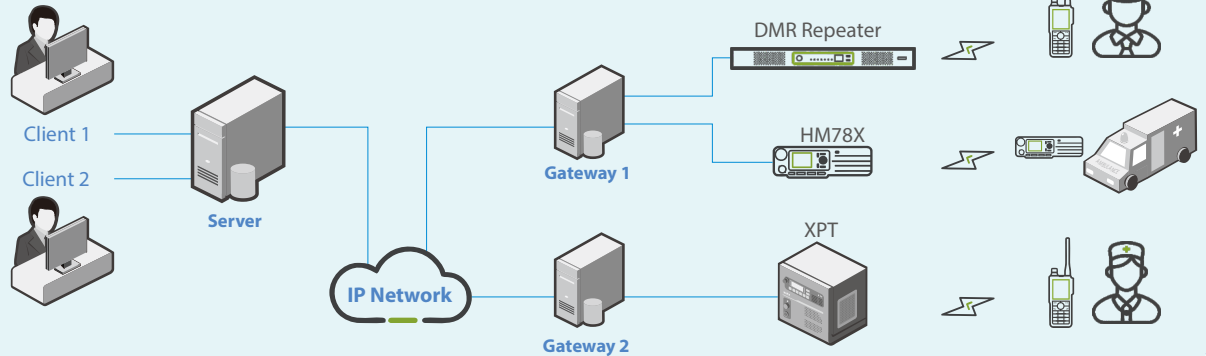
Remotely program some parameters on one or multiple radios at the same time. These parameters include radio ID, radio alias, color code, slot, TX and RX frequency, RX group list, and TX contact name.

FLEXIBLE DISTRIBUTED NETWORKING

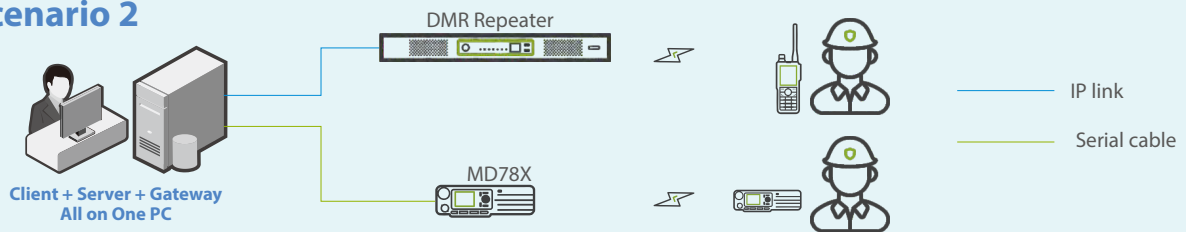
Smart Dispatch Plus adopts a modular design and consists of server, client, and gateway. It can be flexibly deployed based on your requirements.

- Server, gateway and client can be deployed in different places.
- Server, gateway and client can also be installed on the same computer.
- Both repeaters and mobile radios can connect to Smart Dispatch Plus.

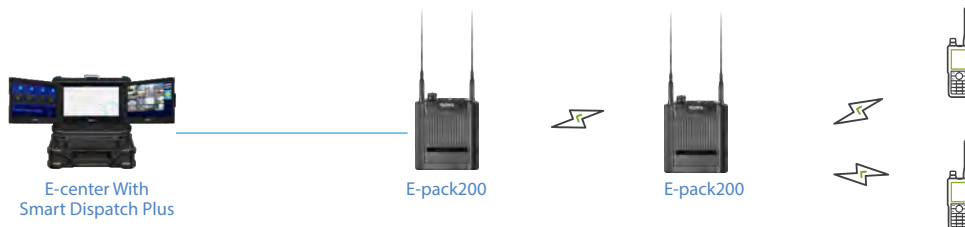
Scenario 1



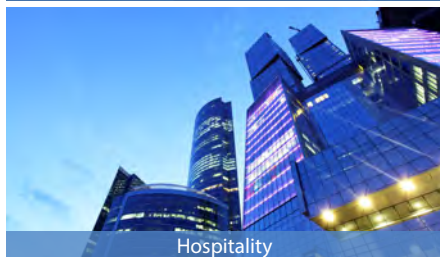
Scenario 2



Smart Dispatch Plus for E-pack200



APPLICATION SCENARIOS



SPECIFICATIONS

System Requirements

Operating System	Windows 10 /Windows 11 //Windows Server 2016/ Windows Server 2019
RAM	≥ 16GB
One Voice Channel Bandwidth	≤120Kbps
Database	PostgreSQL-14.6

System Capacity

1 Server	Up to 32 clients
	Up to 24 gateways
	Up to 32 voice channels
1 Gateway	Up to 16 DMR repeaters or 16 HM78X mobile radios or 4 MD78X mobile radios or 1 XPT site or 1 E-pack200

Firmware Version

Repeater	HR106X	V2.0.01.009(DMR) or later
	RD98X/RD98XS	V9.02.04.004 or later
Mobile Radio	HM78X	V2.0.04.005 or later
	MD78X	V10.0.02.002 or later
E-pack	E-pack 200	N2.0.00.006 or later



Hytera Communications Corporation Limited
Stock Code: 002583.SZ

Address: Hytera Tower, Shenzhen Hi-Tech Industrial Park North,
Beihuan RD.9108#, Nanshan District, Shenzhen, P.R.C.

Tel: +86-755-2697 2999 **Fax:** +86-755-8613 7139 **Post:** 518057

Http: //www.hytera.com **marketing@hytera.com**



Hytera retains right to change the product design and specification. Should any printing mistake occur, Hytera doesn't bear relevant responsibility. Little difference between real product and product indicated by printing materials will occur by printing reason.

HYT, Hytera are registered trademarks of Hytera Communications Corp., Ltd.
©2023 Hytera Communications Corp., Ltd. All Rights Reserved.